

SCALES PROFICIENCY

1. FIRST KEY – WHITE KEY TONIC

A. RIGHT HAND MAJOR

B. RIGHT HAND RELATIVE MINOR

C. LEFT HAND MAJOR

D. LEFT HAND RELATIVE MINOR

2. SECOND KEY – BLACK KEY TONIC

SAME ORDER AS ABOVE

PROGRESSIONS

MAJOR

A musical score for a major chord progression. The top staff is a treble clef with a grand staff brace on the left. The bottom staff is a bass clef. The progression consists of seven chords: I, vi, IV, ii⁶, I⁶, V⁷, and I. Fingerings are indicated by numbers 1-5 above or below notes. The V⁷ chord has a sharp sign above the 4th finger.

I vi IV ii⁶ I⁶ V⁷ I

MINOR

A musical score for a minor chord progression. The top staff is a treble clef with a grand staff brace on the left. The bottom staff is a bass clef. The progression consists of seven chords: i, VI, iv, ii^{o6}, i⁶, V⁷, and i. Fingerings are indicated by numbers 1-5 above or below notes. The V⁷ chord has a sharp sign above the 4th finger.

i VI iv ii^{o6} i⁶ V⁷ i

PROGRESSIONS PROFICIENCY ACCOMPANIMENT STYLES

1. FIRST MAJOR KEY

BLOCKED

BROKEN

2. RELATIVE MINOR KEY

BLOCKED

ARPEGGIATED

3. SECOND MAJOR KEY

BLOCKED

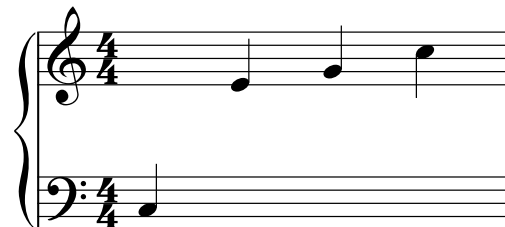
JUMP BASS

4. SECOND RELATIVE MINOR KEY

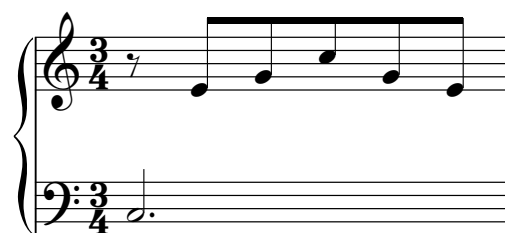
BLOCKED

ALBERTI BASS

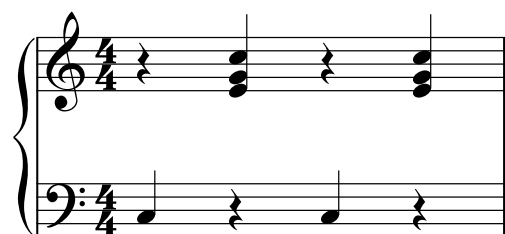
BROKEN CHORD



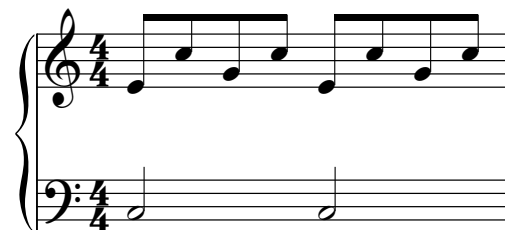
ARPEGGIATED CHORD



JUMP BASS



ALBERTI BASS



FIVE FINGER COORDINATION EXERCISE

Major Minor

This block contains two musical exercises in 4/4 time. The first exercise is labeled 'Major' and shows an ascending and descending scale in both treble and bass clefs. The second exercise is labeled 'Minor' and shows an ascending and descending scale in both treble and bass clefs, with a flat sign (b) under the second note of each scale.

Diminished Diminished Seventh

This block contains two musical exercises in 4/4 time. The first exercise is labeled 'Diminished' and shows an ascending and descending scale in both treble and bass clefs, with flat signs (b) under the second and fifth notes of each scale. The second exercise is labeled 'Diminished Seventh' and shows an ascending and descending scale in both treble and bass clefs, with flat signs (b) under the second and fifth notes, and sharp signs (#) under the third and sixth notes of each scale.

Major

This block contains a musical exercise in 4/4 time labeled 'Major'. It shows an ascending and descending scale in both treble and bass clefs, with sharp signs (#) under the second, third, and fourth notes of each scale. The exercise ends with a double bar line and the instruction: *Continue the pattern without stopping*.

Repeat the above pattern starting on each step of the chromatic scale

FIVE-FINGER POSITIONS

ACCOMPANIED BY I - V6/5 - i
C THROUGH G

Piano

Major minor Major

Detailed description: This musical system shows the first five measures of piano accompaniment in 4/4 time. The treble clef contains a melodic line of quarter notes: C4, D4, E4, F4, G4, F4, E4, D4, C4. The bass clef contains block chords: C major (C-E-G), C minor (C-Eb-G), C major (C-E-G), C major (C-E-G), and C major (C-E-G). The labels 'Major', 'minor', and 'Major' are placed below the bass clef in the first, second, and fifth measures respectively.

Pno.

minor Major etc.,

Detailed description: This musical system shows the next four measures of piano accompaniment in 4/4 time. The treble clef contains a melodic line of quarter notes: D4, E4, F4, G4, F4, E4, D4, C4. The bass clef contains block chords: C minor (C-Eb-G), C major (C-E-G), C major (C-E-G), and C major (C-E-G). The labels 'minor', 'Major', and 'etc.,' are placed below the bass clef in the first, fourth, and fifth measures respectively.