

Draw each note of the following scales in ascending order on the staves provided. Do NOT use key signatures, but draw the flats, sharps (and naturals as needed) in front of the appropriate notes.

1. F-sharp major



2. B-flat natural / pure minor



3. G harmonic minor



4. D-flat major



5. A major



6. C-sharp natural / pure minor



7a. D melodic minor (ascending)



7b. D melodic minor (descending)

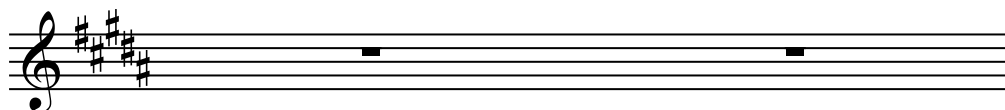


8. E-flat harmonic minor

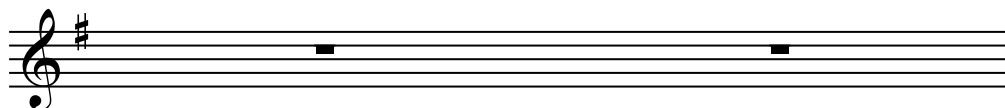


Draw the following key signatures on the staves provided.

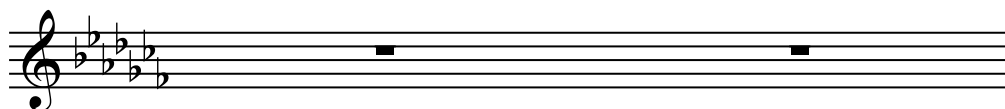
1. B major



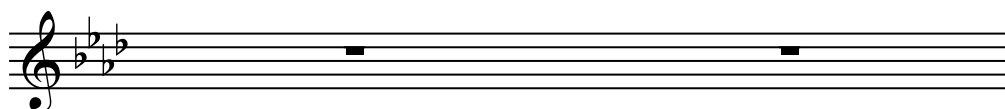
2. E minor



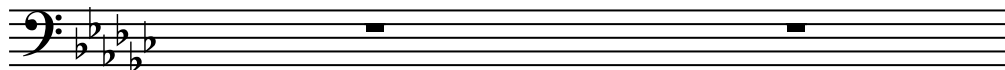
3. C-flat major



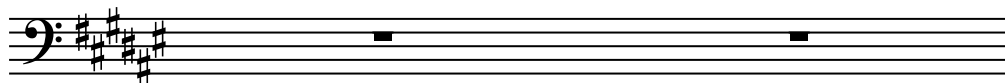
4. F minor



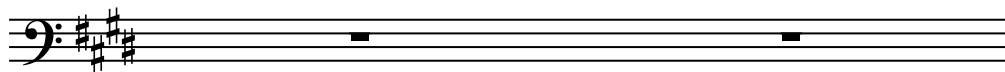
5. G-flat major



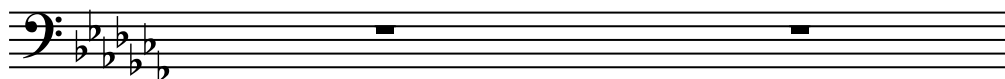
6. D-sharp minor



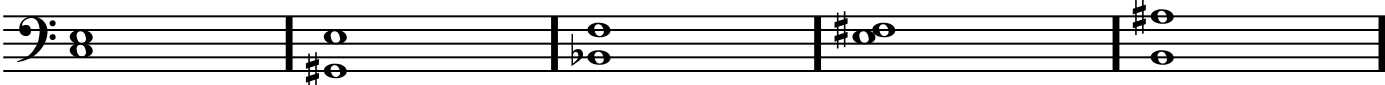
7. E major



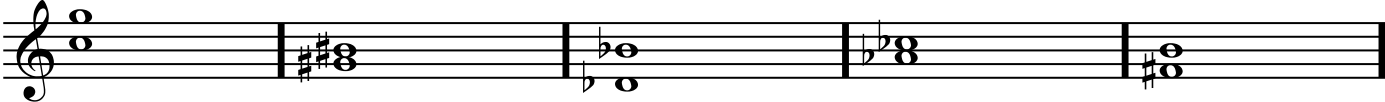
8. A-flat minor



Analyze these intervals by labeling 1. The quality of the interval (use "P" for "Perfect", "Mj" for "Major", "mn" for "Minor"), and 2. the number for the size (See Examples).



Mj 3                  mn 6                  P 5                  Mj 2                  Mj 7



P 5                  Mj 3                  Mj 6                  mn 3                  P 4