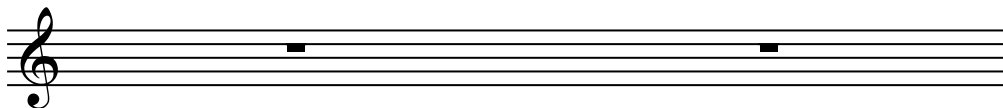


Draw each note of the following scales in ascending order on the staves provided. Do NOT use key signatures, but draw the flats, sharps (and naturals as needed) in front of the appropriate notes.

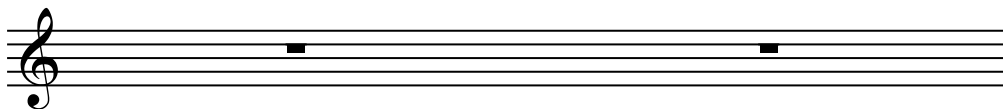
1. F-sharp major



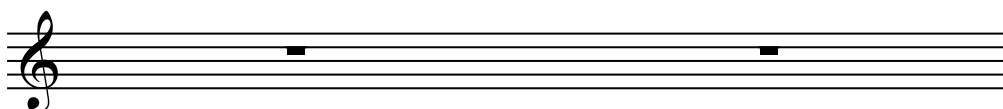
2. B-flat natural / pure minor



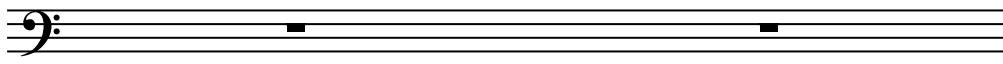
3. G harmonic minor



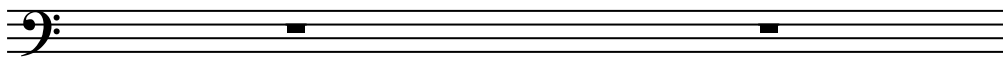
4. D-flat major



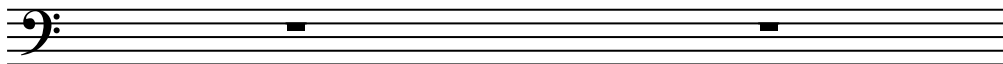
5. A major



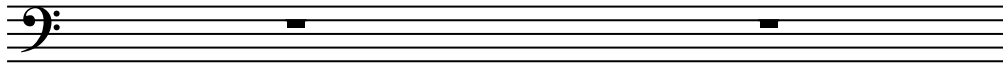
6. C-sharp natural / pure minor



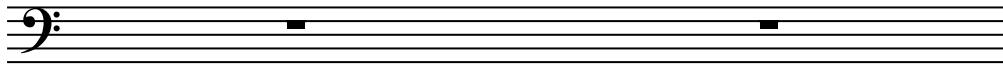
7a. D melodic minor  
(ascending)



7b. D melodic minor  
(descending)

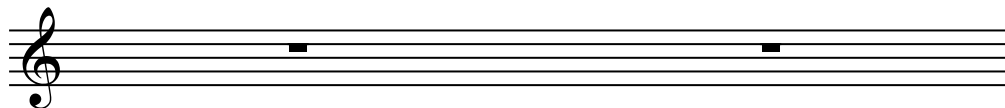


8. E-flat harmonic minor

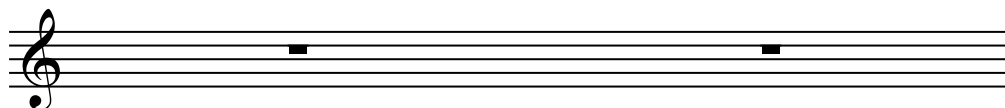


Draw the following key signatures on the staves provided.

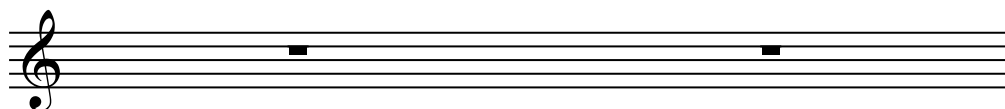
1. B major



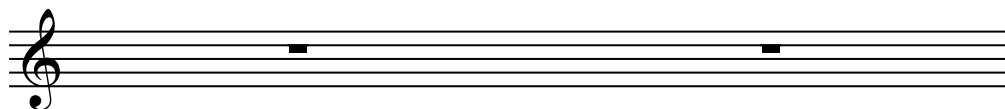
2. E minor



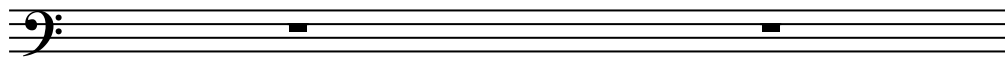
3. C-flat major



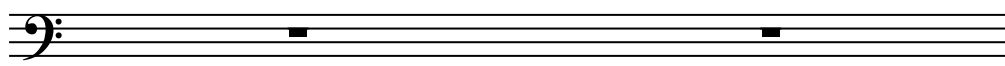
4. F minor



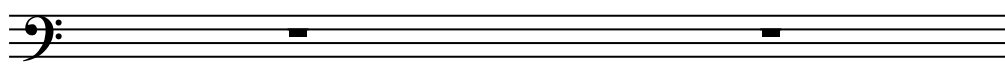
5. G-flat major



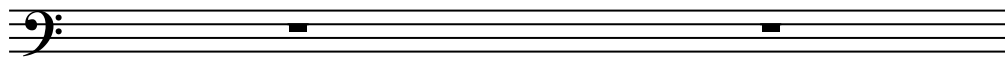
6. D-sharp minor



7. E major



8. A-flat minor



Analyze these intervals by labeling 1. The quality of the interval (use "P" for "Perfect", "Mj" for "Major", "mn" for "Minor"), and 2. the number for the size (See Examples).

A bass clef staff containing four intervals, each in a separate measure. The first measure shows G2 and A2. The second measure shows G2 and Bb2. The third measure shows G2 and A#2. The fourth measure shows G2 and B2.

Mj 3                    \_\_\_\_\_                    \_\_\_\_\_                    \_\_\_\_\_                    \_\_\_\_\_

A treble clef staff containing four intervals, each in a separate measure. The first measure shows C4 and D4. The second measure shows C4 and E4. The third measure shows C4 and F4. The fourth measure shows C4 and G4.

P 5                    \_\_\_\_\_                    \_\_\_\_\_                    \_\_\_\_\_                    \_\_\_\_\_