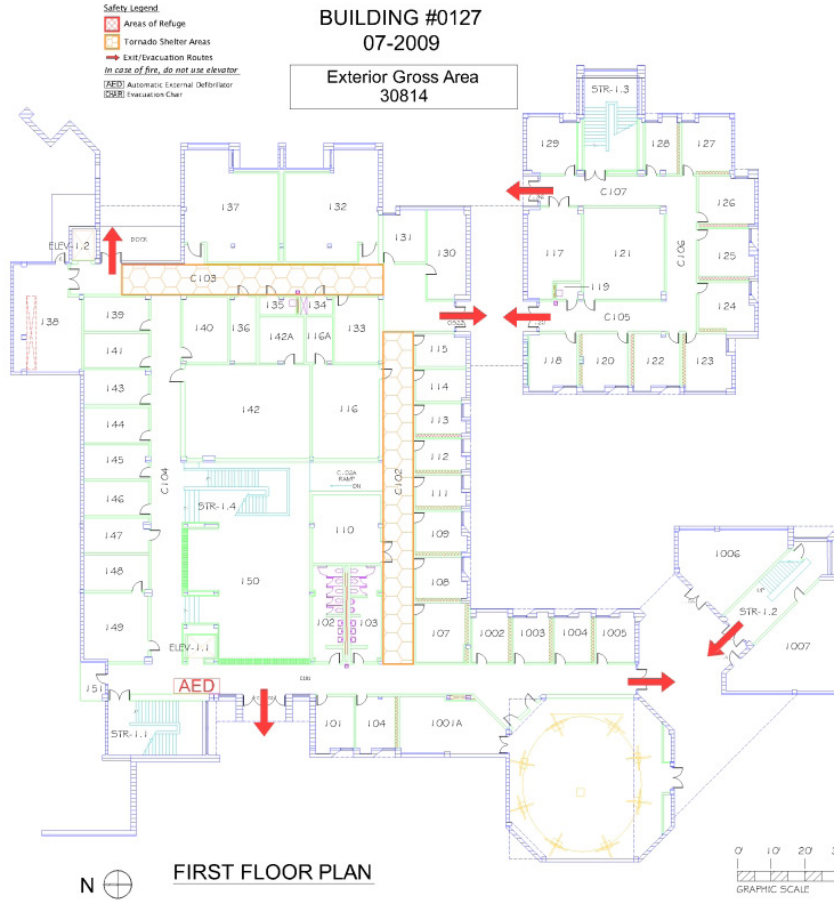


# MUSIC BUILDING

BUILDING #0127  
07-2009

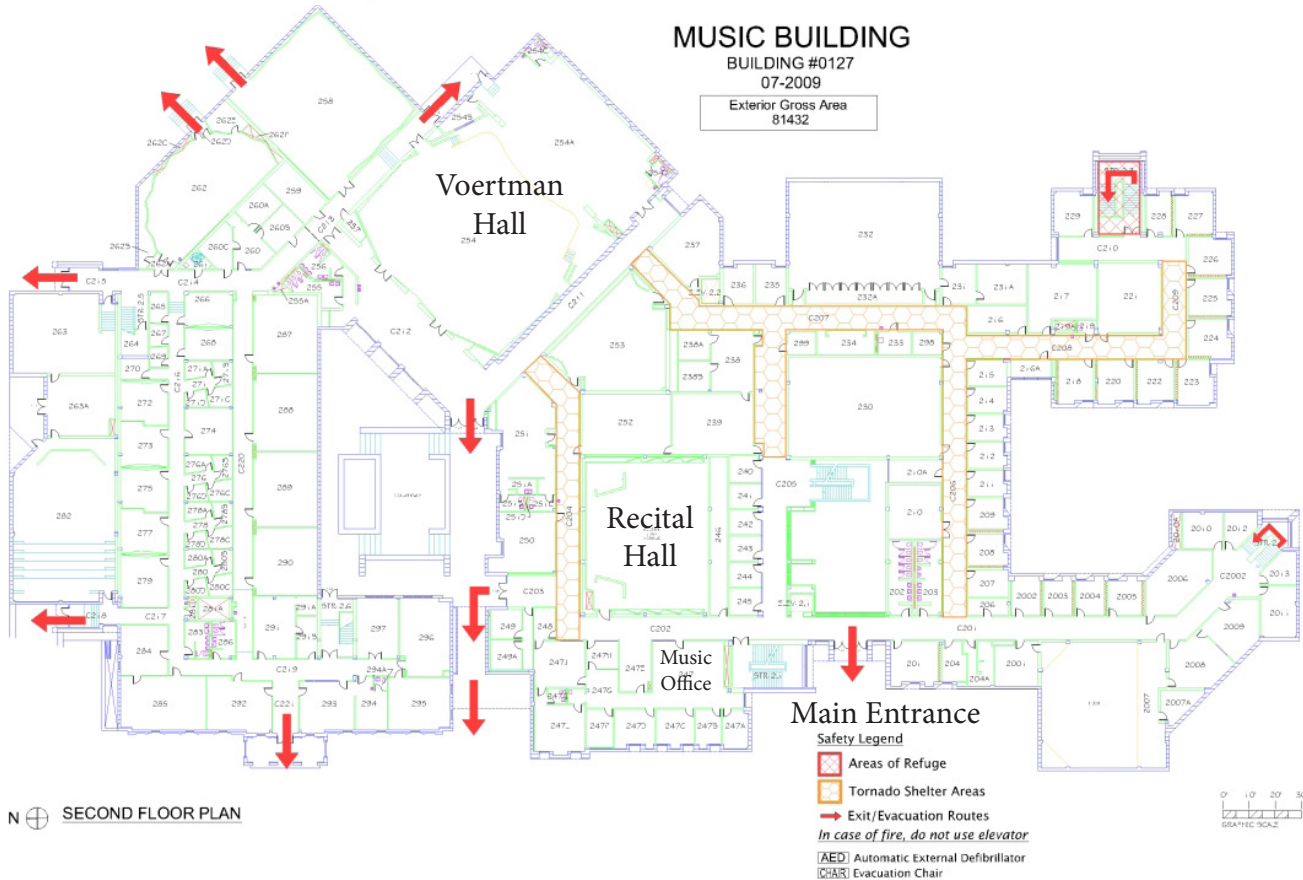
Exterior Gross Area  
30814



# MUSIC BUILDING

BUILDING #0127  
07-2009

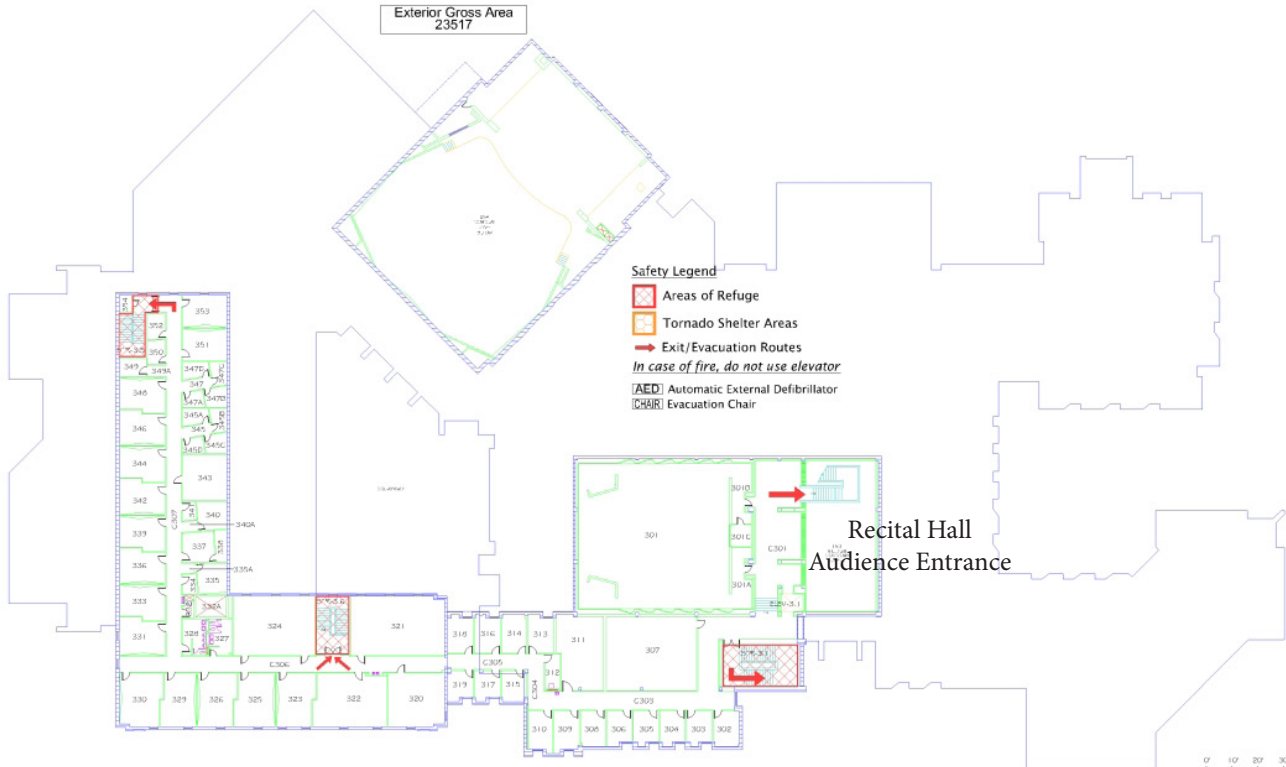
Exterior Gross Area  
81432



# MUSIC BUILDING

BUILDING #0127  
06-2007

Exterior Gross Area  
23517



- Safety Legend**
- Areas of Refuge
  - Tornado Shelter Areas
  - Exit/Evacuation Routes
  - In case of fire, do not use elevator*
  - [AED] Automatic External Defibrillator
  - [CRIR] Evacuation Chair

Recital Hall  
Audience Entrance

N ⊕ THIRD FLOOR PLAN

